



Health. <More-connected.>

Afia Analytics

Afia Analytics goes beyond dashboards to create business intelligence. Increased revenue. Improved processes. Empowered staff.



Cost of Service Analytics Package

Data Warehouse and BI Dashboards

To compete and survive in the value-based marketplace, it is essential for behavioral healthcare agencies to know the true cost of providing services, and how that compares to standard fees, contracted rates, actual payments, and budgeted funds. Afia automates this process by extracting data from your EHR, General Ledger, and Payroll system and developing algorithms informed by your agency's payer contracts and business practices. Flexible dashboards make parsing and drilling into income statement and payroll data easier, as well as viewing and managing direct cost, indirect cost, and general and administrative cost at all levels of your agency's organizational hierarchy.

Cost-Based Insight

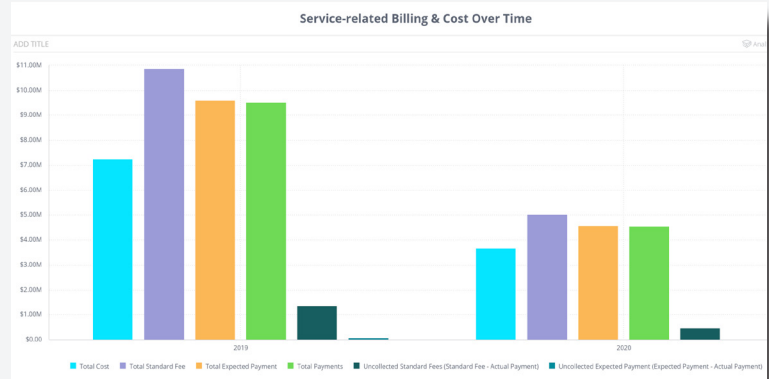
Easy-to-use dashboards, complete with powerful drill-down and filtering capabilities, allow agencies to make data-driven decisions about the business, including evaluating cost models for currently established care practices. Once agencies pair population-based costs with client outcomes, these models are also able to provide insights into the cost associated with various value-based models to evaluate how well your agency is positioned to manage value-based cost contracts or other bundled/capitation rate programs.

Monitoring and Optimization

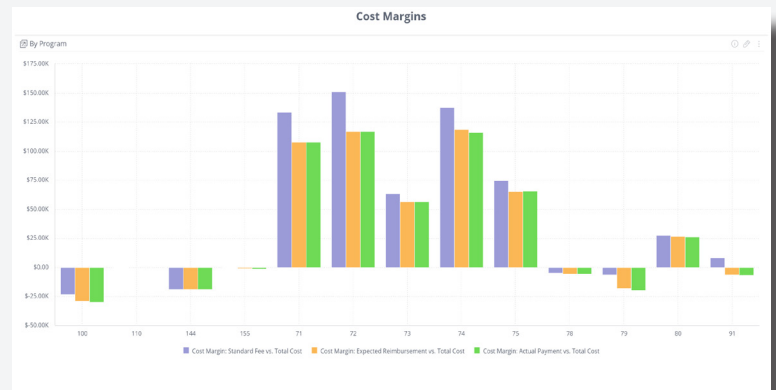
With our Innovation Services, agencies gain access to support from industry subject matter experts to assist with change management, process improvement, value-based care incentive model planning, among a host of other services. These Innovation Services will be aligned to ensure the Afia Analytics project sets your agency up for success in leveraging data to support all of your strategic goals.

Sample Cost of Service Dashboards

• Cost Over Time



• Cost Margins by Program



• Cost Details by Service Code

Service Code ID	Total Standard Fee	Total Expected Payment	Actual Payment	Total Cost	Uncollected Standard Fees (Standard Fee - Actual Payments)	Uncollected Expected Payment (Expected Payment - Actual Payments)	Cost Margin: Does Standard Fee exceed Total Cost?	Cost Margin: Does Expected Payment exceed Total Cost?	Cost Margin: Do Actual Payments exceed Total Cost?
168	\$248.55	\$230.11	\$230.11	\$594.94	\$18.44	\$0.00	\$-346.39	\$-364.83	\$-364.83
169	\$18,707.81	\$14,881.16	\$14,263.42	\$29,710.95	\$4,443.89	\$507.74	\$-11,009.64	\$-14,879.79	\$-15,447.93
171	\$12,312.00	\$11,982.12	\$11,919.66	\$17,958.99	\$1,301.34	\$71.46	\$4,742.99	\$-5,976.87	\$-6,068.33
182	\$6,352.00	\$5,109.77	\$5,003.29	\$7,652.70	\$1,348.71	\$1,064.48	\$-1,300.70	\$-2,542.03	\$-2,649.41
196	\$297,153.91	\$263,948.50	\$263,948.50	\$221,856.41	\$33,205.41	\$0.00	\$75,797.50	\$42,092.00	\$42,092.00
197	\$81.46	\$70.58	\$70.58	\$0.00	\$10.88	\$0.00	\$81.46	\$70.58	\$70.58
198	\$1,361.00	\$1,073.42	\$1,073.42	\$0.00	\$287.58	\$0.00	\$1,361.00	\$1,073.42	\$1,073.42
202	\$84.50	\$93.10	\$93.10	\$0.00	\$1.48	\$0.00	\$84.50	\$93.10	\$93.10
208	\$40,351.83	\$40,351.83	\$40,351.83	\$38,953.94	\$0.00	\$0.00	\$1,397.89	\$1,397.89	\$1,397.89
211	\$4,501.48	\$3,737.53	\$3,588.87	\$6,733.03	\$972.61	\$148.66	\$-2,231.55	\$-2,995.50	\$-3,144.10
212	\$315,339.26	\$286,333.23	\$286,333.23	\$256,286.97	\$45,206.03	\$0.00	\$4,742.71	\$-49,053.74	\$-49,053.74
213	\$67,766.62	\$52,973.58	\$53,126.42	\$56,641.96	\$14,640.20	\$-152.84	\$13,126.66	\$-3,668.38	\$-3,515.54
215	\$801.24	\$603.24	\$603.24	\$6,402.24	\$198.00	\$0.00	\$-5,601.00	\$-5,799.00	\$-5,799.00
229	\$107.88	\$107.88	\$107.88	\$253.13	\$0.00	\$0.00	\$145.25	\$145.25	\$145.25
235	\$4,162.82	\$3,848.27	\$1,723.67	\$2,449.95	\$2,429.28	\$3,234.69	\$1,713.97	\$1,498.32	\$-705.28
237	\$194.52	\$92.58	\$92.58	\$359.24	\$101.94	\$0.00	\$-164.72	\$-266.66	\$-266.66
240	\$4,309.92	\$2,521.75	\$2,338.83	\$1,603.28	\$1,971.09	\$182.93	\$2,706.64	\$918.47	\$735.53
244	\$6,407.00	\$2,253.78	\$2,054.36	\$2,509.60	\$4,352.64	\$199.42	\$3,837.40	\$-315.82	\$-915.24
245	\$9,261.62	\$4,767.79	\$4,693.73	\$11,308.46	\$4,507.89	\$74.00	\$4,206.84	\$-4,560.67	\$-6,014.73
252	\$56,070.98	\$49,037.10	\$47,924.46	\$59,732.72	\$8,146.52	\$1,112.64	\$3,661.74	\$-10,695.62	\$-11,808.26
255	\$52.50	\$52.50	\$0.00	\$106.60	\$52.50	\$0.00	\$-54.10	\$-54.10	\$-106.60
256	\$157.50	\$157.50	\$157.50	\$319.81	\$0.00	\$0.00	\$-162.31	\$-162.31	\$-162.31
257	\$52.50	\$52.50	\$0.00	\$106.60	\$52.50	\$0.00	\$-54.10	\$-54.10	\$-106.60
262	\$315.00	\$315.00	\$315.00	\$639.61	\$0.00	\$0.00	\$-324.61	\$-324.61	\$-324.61
265	\$2,443.76	\$1,500.81	\$1,500.81	\$3,516.84	\$942.95	\$0.00	\$-1,072.08	\$-2,016.03	\$-2,016.03